

Parent Council Head Teacher's Report

Wednesday, 11th September



School Session so far...



- Meet the Teacher
- P5 Swimming
- DREAM about Shoes (on Friday)
- Attainment Meetings for P1, P4, P7
- Finance Committee first meeting this session
- Lagganlia Meeting for P6 and P7 parents and carers
- Empowered Learning presentation for P6 parents and carers. iPads to be with our P6s soon.

And coming up...



- **Autumn Fair – 28th September**
- **Parents Consultations – 8th and 10th October**
- **Open Day for new P1 Parents and Carers – Wed, 6th Nov**
- **Open Morning for Parents and Carers – Wednesday, 20th Nov**
- **P7 Camp, 25th – 29th Nov**

And coming up...



- End of Term Church Service
- Walking in a Winter Wonderland – 6th Dec
- P1 Nativity – 6th Dec
- P7 Nativity Trail (Escape Room!)
- Whole School to the Pantomime! (18th Dec)

Current School Roll

Blackhall currently has a roll of 368 pupils.

This has dropped from last year's 373.

Average class size is 24.5 pupils.

P1 and P2 are the only stages that are full.



Staffing

- Anna Hazel Dunn is our new DHT
- Andrew Gardner will return to class and his substantive PT post at the end of this month.
- Rachel Noonan is pregnant – maternity leave begins in January.



Staffing

New Staff:

- Holly James - P7J
- Molly Chrystie – P2C



Staffing – PSA Team



- We have 14 PSAs at Blackhall but only 5 full time.
- PSAs heavily allocated to one to one support
- 8-9 adults across P1 and P2 each day.
- This means we have very little-to-no Pupil Support Assistants for general classroom support.
- Playground cover is tricky with SLT required most days.
- School is working on ways to make best use of this valuable resource.

P1 and P2 School Day – added break



- P1 and P2 have a very long lunch time of 1 hour and 5 minutes.
- This will now be shortened by 20 minutes, with an afternoon break being added.

~~Priorities~~ Things to make better at Blackhall this year.



- Planning
- Learning for Sustainability - Outdoor Learning
- Leadership of Learning (Learning and Teaching)
- Resilience



School Improvement Plan for 2024-25

Our Plan for improvement 2024-25

Vision – High expectations of teaching and learning: creative approaches with pace and challenge for all.

Vision - A happy, safe and engaging place to learn about the world and our place in it.

Focus on Planning for Stronger Learning and Teaching

Teachers working together to ensure creative and careful planning for progressive learning experiences.

Focus on Numeracy to raise attainment – including whole school Maths Week in December.

Whole school themes of, “DREAM About Shoes” and, “STeAM Ahead with Robotics,” to ensure deeper exploration of Expressive Arts and STEM

Embed Learning for Sustainability themes throughout learning experiences

Teachers working together to ensure creative and careful planning for progressive learning experiences.

Focus on Numeracy to raise attainment – including whole school Maths Week in December.

Adopting a “Big Questions/Enquiry” approach to learning – particularly Outdoor Learning.

Let's Work on Resilience

Pupils leading pupils in overcoming barriers, finding solutions together, recognising the “gift of failure”, building self-esteem and self-advocacy.

Teacher professional reading and collegiate professional development to establish consistent approaches.

Working with Parents and Carers to help support this goal: Parent Meetings, ASN Coffee Mornings; Surveys

Improve Attainment in Numeracy

Working party to review teaching of numeracy, particularly in P5-7.

Use attainment data to identify gaps in learning. Work together to improve planning and teaching approaches to raise attainment for all.

Shared Classroom Experiences and Lesson Studies among teaching staff with a focus on Numeracy to help improve teaching and learning.

Our Values are our foundation

Creativity Resilience Ambition
Respect Responsibility

New Tracking Programme to help monitor and target improved attainment.

Teachers to be trained in a new programme to help inform attainment discussions and identify learning approaches and improvements.

Tracking approach to be shared with Parents and Carers at Parent Carer Council Meeting.

Finance Committee



- Finance committee met this week.
- CEC Budget savings mean no carry-forward from last year.
- This year is going to be extremely tight for spending.



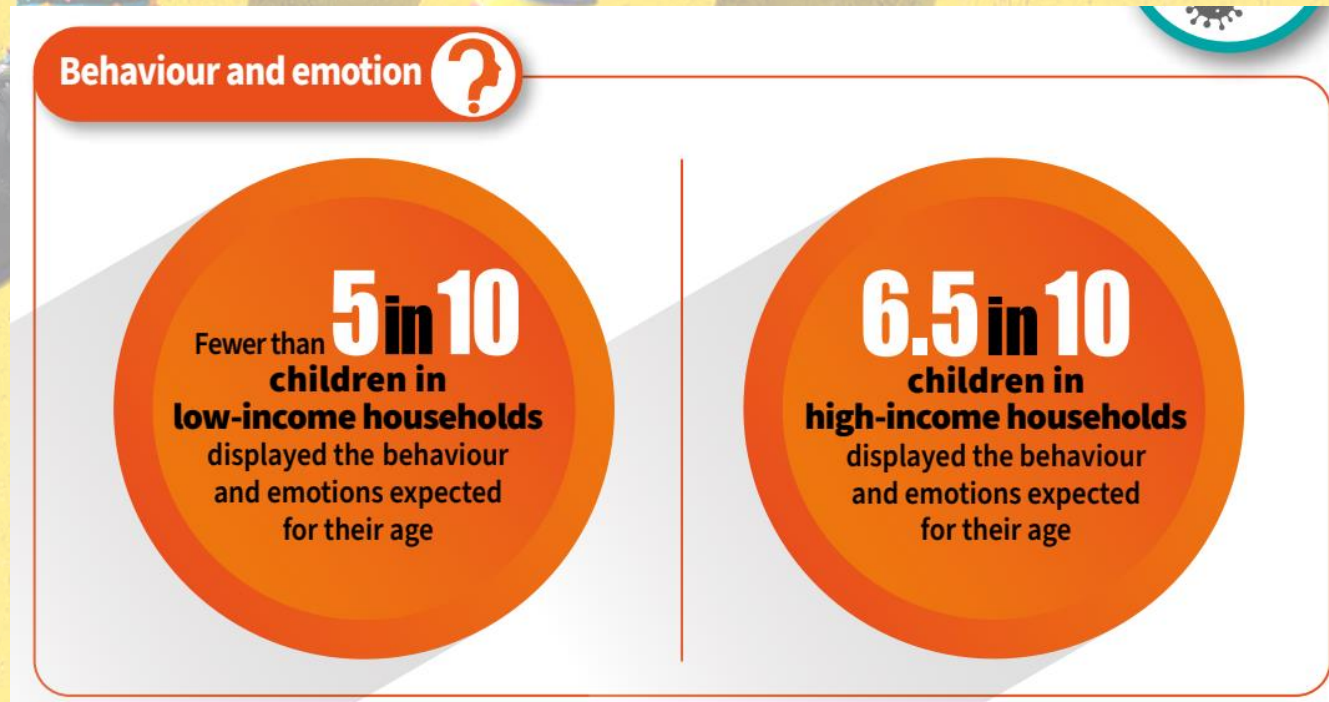
Finance Committee

- **Decisions have to be made about limiting the school experience for our children.**
- **Whole school excursions planned for Panto and Royal Highland Show. May have to rely on donations from home.**

Building Resilience in Blackhall

We need your help...

- Planning for an information session for parents and carers to help us build our children's resilience.
- CEYRIS (Covid Early Years Resilience and Impact Study) Findings



Parking!

- Still a problem
- Some parents and carers continue to park without care or consideration for any child's safety.
- Police have been informed and there has been a presence on a couple of mornings.
- Junior Road Safety Officers are being tasked with this mammoth task. If you are guilty – expect to be shamed.



Parent/Carer Questions.



Rubbish around the school

- Mr McCutcheon is on holiday.
- Relief Janitorial service to cover.
- Several Reminders re daily tasks - including emptying bins and sweeping playground for litter (among other things).
- Steven Smith (Business Manager) in contact with FM (Facilities Management).

Parent/Carer Questions



Twitter/X

- Very happy to abandon this platform.
- Pics and messages will be restricted to class Teams from now on. Not as accessible, but less politically/morally questionable.
- There will also be a channel for Achievements on each Class Team.

Parent/Carer Questions



Friday Packed Lunches – not healthy

- Christopher Ross, Catering Operations Manager:
- Christopher.ross2@edinburgh.gov.uk
- Pupil Council would be happy to take this on.
(Hal had suggested we copy her in on the correspondence re lunches last year.)

Parent/Carer Questions



Class Mixing – use teacher judgment only

- Teacher judgment is a big factor.
- Goes against the grain to ,cut the children out completely as the vast majority are quite happy.
- Something to consider.

Attainment 23 -24

Current Stage	Session	On Track Reading	On Track Writing	On Track Listening Talking	On Track Numeracy
P1	2023	97.92%	97.92%	100.00%	91.67%
P2	2023	91.23%	89.47%	94.74%	91.23%
P3	2023	91.67%	89.58%	93.75%	95.83%
P4	2023	88.46%	82.69%	90.38%	80.77%
P5	2023	87.27%	74.55%	92.73%	81.82%
P6	2023	92.65%	86.76%	97.06%	86.76%
P7	2023	90.00%	90.00%	92.00%	86.00%

New Pupil Tracking Programme

- Attainment Data is tracked and recorded on new programme across city.
- Staff to be trained.
- Raising attainment remains the goal. Of course.



You don't
fatten
pigs
by
weighing
them!



Playground Improvement Phase 1

- Plans are submitted.
- Waiting for CEC to give us a date for work.



THE END.

