

Parent Carer Council Head Teacher Report



Wednesday, 13th November

Current School Roll

Blackhall currently has a roll of 371 pupils.

Average class size is 24.7 pupils.

P1 and P2 remain the only stages that are full.

Aimee is being asked for a monthly update of pupils coming from the private sector and there is a button on SEEMiS to indicate this as a reason for enrolment.



Staffing



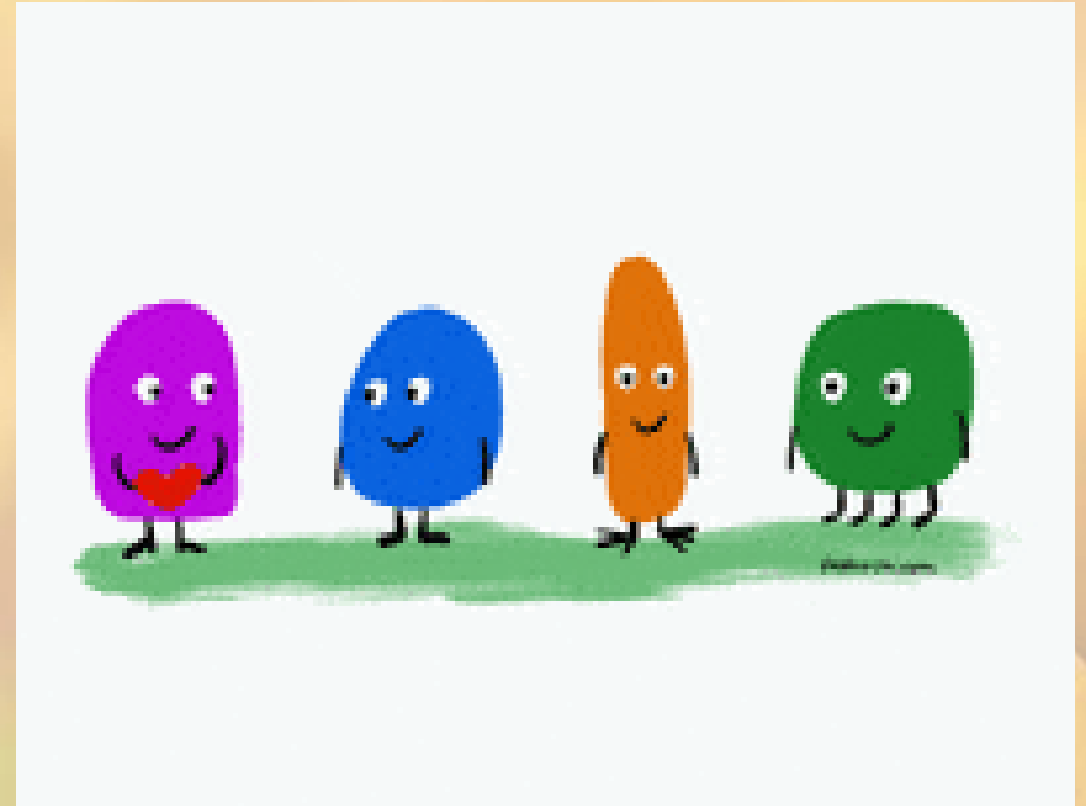
- Rachel Noonan's maternity leave cover has been appointed. Nina Fairley is joining us in January.
- Eric Jackson, PSA, has had some hand surgery and will be recovering until the new term. On his return, Mr Jackson will be reducing his hours.

Staffing

We are almost at full capacity for PSA support.

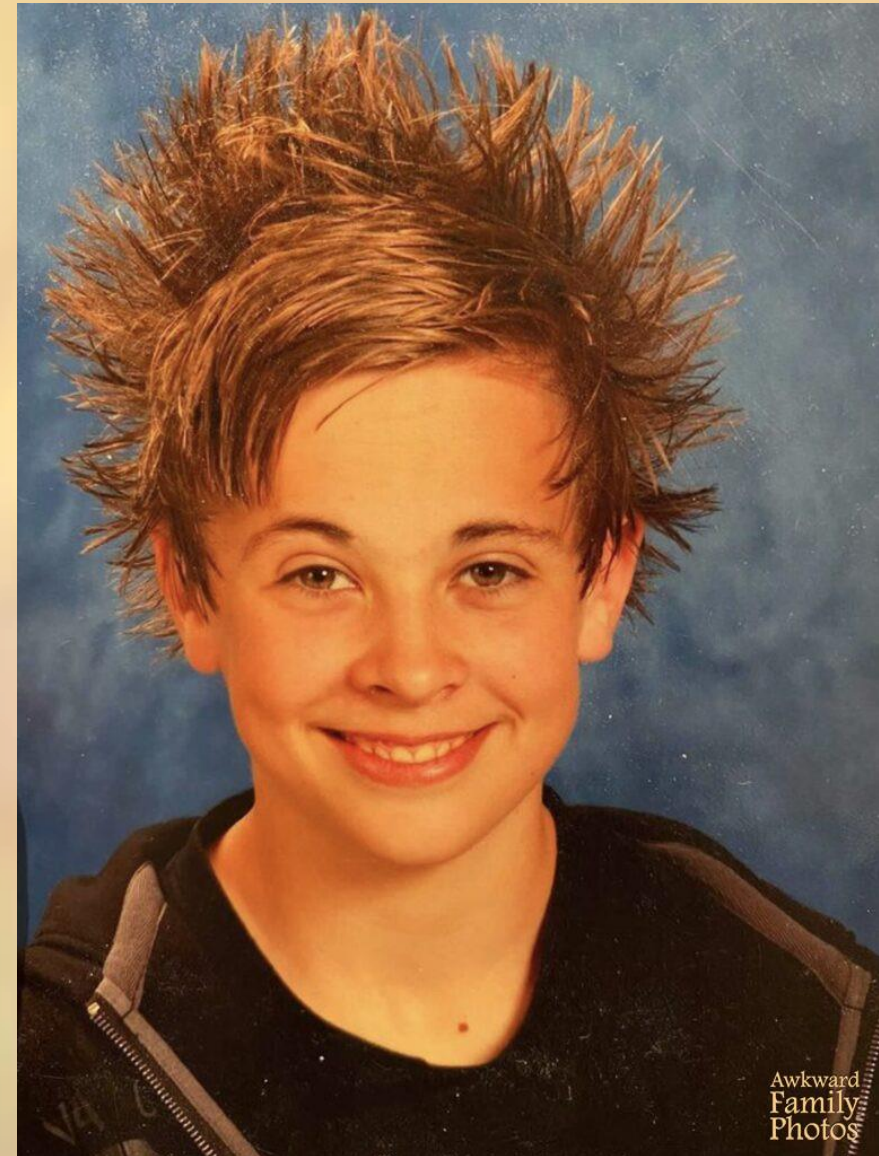
We have an additional person for some of the week and a volunteer on a Friday.

CEC Support Worker review is ongoing.



Recently...

- Successful Autumn Fair – over £2,500 raised
- Parent/Carer Consultations – 8th and 10th October
- Open Day for new P1 Parents and Carers, led by P6s – Wed, 6th Nov
- Remembrance Assembly with Fergus Cook on Wed 6th
- Individual and Sibling photos on 7th and 8th November.



And coming up...



- Attainment Meetings (SLT and Teachers)
- Homework Evening, 21st November
- P7 Camp, 25th – 29th Nov
- Winter Art Day – Monday, 2nd Dec

LET'S GO TO CAMP



And coming up...

- P1 Nativity – 6th Dec
- Maths Week – w/beg 9th Dec
- Walking in a Winter Wonderland and Sharing Learning Morning – 13th Dec
- End of Term Church Service – 17th Dec (P6 Parents and Carers Welcome)
- Whole School to the Pantomime! (18th Dec)
- P7 Nativity Trail – 20th Dec (Escape Room!)

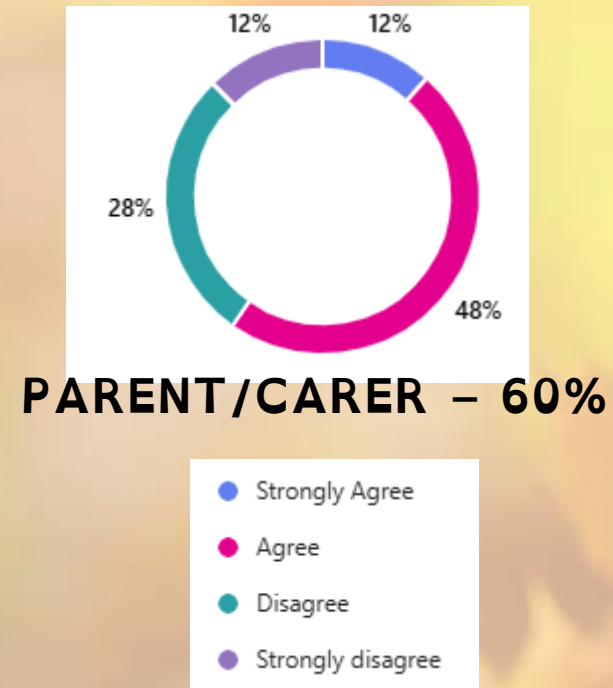


Homework – Consultation Scheduled

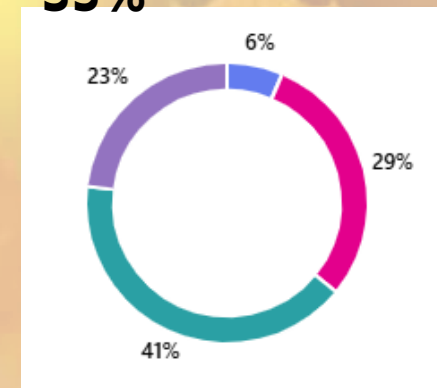
- Meeting scheduled for Thursday, 21st November at 7pm. All welcome.
- Feedback is comprehensive.
- Learning at home needs to be consolidating and meaningful.
- NO NEW LEARNING
- CLASS LEARNING MUST NOT BE DEPENDENT ON LEARNING DONE AT HOME.



Enjoy doing homework...



CHILD – 35%



Money and stuff...



- Budget remains tight. Staff cover is our biggest expense.
- New Smartboards ordered for the P1 areas (from Autumn Fair money)
- Additional Bike Rack and Scooter Rack required.
- New carpets coming to P5MG and P3B next weekend. (Safety issue – not from our budget. 😊)

Parking

- Still a problem
- Map of safe places to park will be issued with this week's newsletter.
- It won't include here!
(Picture sent by neighbour – morning drop-off.)



P1 and P2 School Day – added break



- The afternoon break in P1 and P2 is working very well.
- Staff reporting a much better balance to the afternoon.
- Children are easier to bring back into the learning after a shorter lunch break. (The longer lunch usually brought its own incidents and 'stories'.)
- Following afternoon break, the input for the next day's learning is shared.
- Previously, this had been done within the longer afternoon and could be lost before the end of the day.
- Shoes are not being changed after the afternoon break. No extra time taken for shoe-changing.
- All in all, our amazing P1 and P2 team is in agreement that this new organisation of the afternoon is a significant improvement.

Care Experienced Fund

- Schools do not automatically get additional funding for ASN or CE pupils.
- There was a Care Experienced Fund of £500 for which schools could apply but had to be spent through procurement.
- This fund was problematic and is now frozen.



Meta Moments at Blackhall

- Classes are preparing to include Meta Skills in our learning.
- Emails have gone out, asking for any resources that could be useful to exercise the skills.



Christmas Jumper Sustainable Swap Shop!



- Sarah Mitchell is organising a 'Sparkle Swap Shop' to encourage sustainable use of Christmas Jumpers/Tops.
- This will be available in the playground before and after school from the last week in November.
- Parents and Carers are encouraged to take or swap.

Bikeability

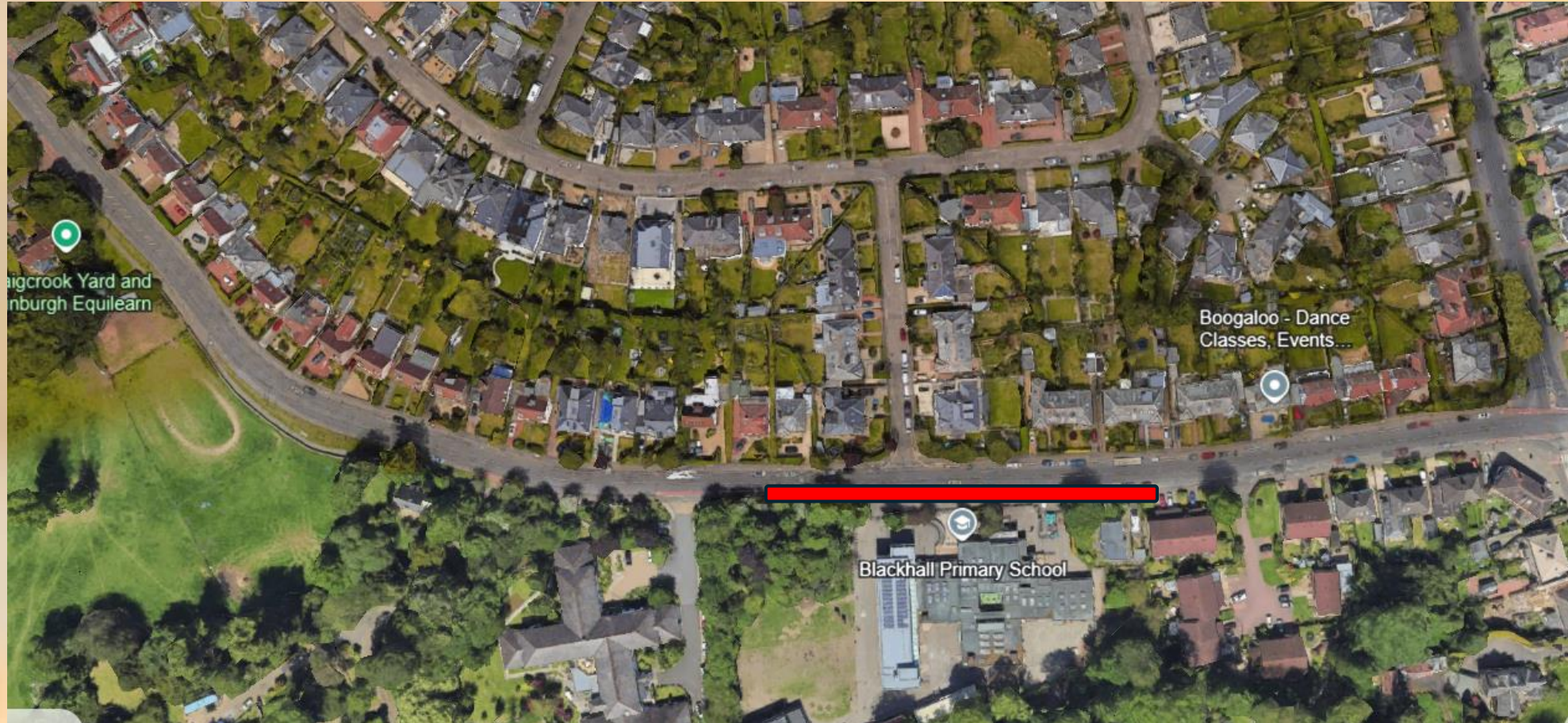
- Anna Hazel Dunn, DHT, is heading along for the training sessions (15th and 22nd Nov).
- We have one parent signed up.
- There are another 2 members of staff who are trained
- We are hopeful that we can run the sessions for at least P7 this school year.



Safe and Sensible Places to Park – ample, unrestricted parking within 3 minute walk of our school.



Safe and Sensible Places to Park



Safe and Sensible Places to Park



Playground Improvement Phase 1 – COMPLETE!



Thank you for listening!

