



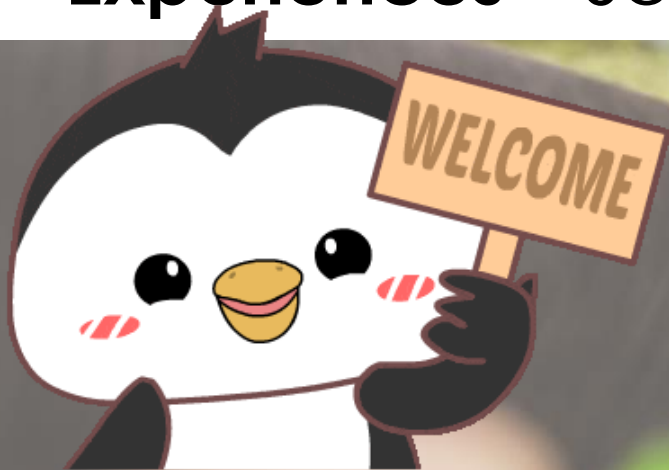
**Welcome to  
Blackhall Primary  
School  
and  
Primary One**



# Welcome to life as part of Blackhall Primary Community!

## New...

- **Places** - The Dip, The Field, The Park, The Wonder Woods, The 'woods woods', The sweetie shop, Andy & Georges, The School Gate ...
- **Abbreviations** – BCSC, PSA, PCC, ASN, ASC
- **Communications** - Blackhall Residents facebook, P1 Whats apps, Classlist, Parentmail
- **Experiences** – School Discos, Eco Fairs, Dress down, Dress Up



# Our Vision

- Blackhall Primary is an inclusive school.
- We are respectful and kind.
- We try to keep healthy and fit.
- Every voice is heard and opinions respected.
- We have pride in our school and aim to be good ambassadors.
- We have opportunities to learn, try new things, make mistakes (and learn from them!) and be successful.





# Our Blackhall Values





# Our School Rules

Ready  
Safe  
Respectful



# Blackhall Primary School in Context

## Our Royal High School Learning Community:

- Blackhall Primary
- Clermiston Primary
- Cramond Primary
- Davidson's Mains Primary
- The Royal High School

Location:

North West Edinburgh

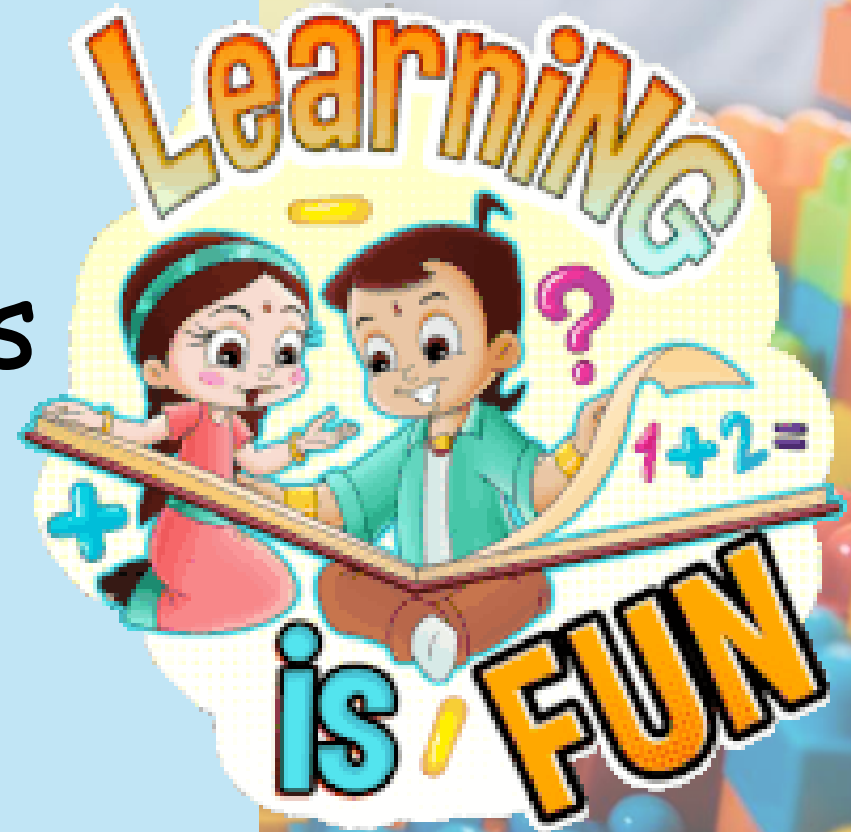




# Blackhall Primary School in Context

School configuration 24/25:

- 379 pupils, approx
- 15 classes (Average 25 pupils per class)
- 2 P1 classes;
- P2/1 Composite and P2 class



# Senior Leadership Team

- Head Teacher
- Depute Head Teacher
- Principal Teacher/Acting DHT
- Business Manager

Kirsty Martin  
Gail Middlemiss  
Andrew Gardner  
Steven Smith







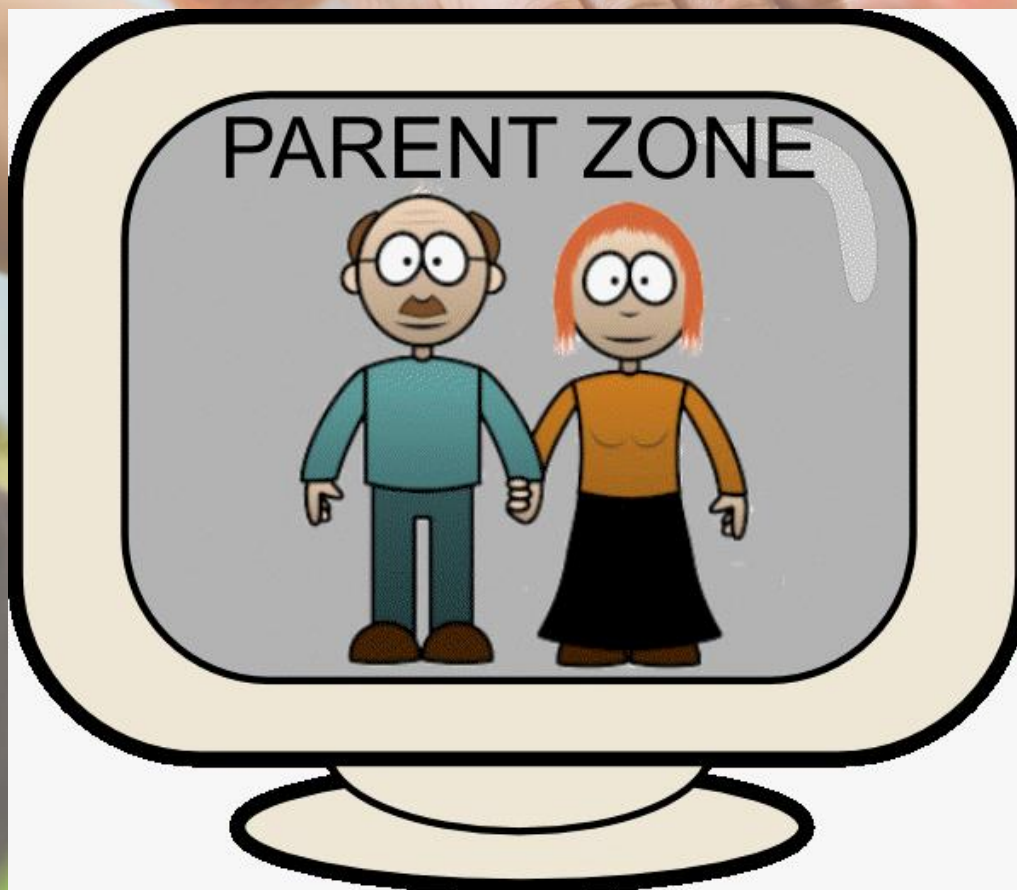
# spring oscars

by Action for Children

Breakfast Club  
After School Club  
Holiday Programmes  
Activities

[SpringOscars@actionforchildren.org.uk](mailto:SpringOscars@actionforchildren.org.uk)

# Blackhall Parent Staff Association (PSA) and Blackhall Parent Carer Council





# Blackhall School Parent Carer Council



Jane Browning, Parent Council Chair

# Role of Parent Carer Council – Jane Browning, PC Chair

Parent Council (PCC) works with the school and its staff to represent the view of parents on a range of matters affecting school life.

## Members...

- feedback on school initiatives and proposals
- help guide the setting of priorities
- represent the interests of the school area and City of Edinburgh Council





# Parent Carer Council Composition

PCC is made up of

- a parent representative for each year group;
- an additional representative for children with additional support needs (ASN);
- the headteacher;
- some representatives from the teaching staff;
- local councillors from various political parties.



# Parent Carer Council Meetings

- All parent/carers welcome
- We meet once a term as a group and most other business is handled online
- Parent/Carer reps communicate Parent Carer Council news and business across their year group through Classlist and regularly seek and organise feedback from parents – opportunity to contribute to the school.
- Minutes and further info online







# Blackhall Parent Staff Association



Frances Ross , PSA Chair

# Role of Blackhall PSA

- A collection of parents and staff who work in conjunction with the School and Parent Carer Council to enrich the children's experiences
- Helps provide the school with items the council budget can't provide
- Supports the community of parents and carers
- Meet 4 times a year and AGM
- Has charitable status with 4 trustees (Chair, VC, Treasurer and Secretary) who report to OSCRS annually

**Thank you!**



# Income and Investment

- £10-£15k income per year
  - Largely through fundraising and events
- Investment in
  - Facilities - playground and sensory space
  - Equipment - i-pads and play/craft equipment
  - Learning resources - library books and language subscriptions
  - Events - pantomime and parties
  - Experiences - outdoor learning and trips
  - P1 and P7 transition and celebration





# Events/Fundraising





# Events/Fundraising





# Library





# Football





# Events/Fundraising – Our Main Goal





# Support Blackhall Primary by:

- Using Amazon Smile Log in via: <https://smile.amazon.co.uk> and chose Blackhall Primary School PSA as chosen charity;
- Shop online using EasyFundraising with over 6000 retailers- select Blackhall Primary School - Edinburgh- they'll double your first £5 too! <https://www.easyfundraising.org.uk>;
- Purchase uniform from Border Embroidery
- Donation <https://www.justgiving.com/campaign/blackhallprimaryPSA>
- Match funding, donation of goods and time.



# Dates for the diary

- **Saturday, 1 June 2024** - Blackhall Children's Sports Committee Day, Ravelston Park
- **Thursday, 13 June 2024, 6.00pm** - Blackhall Parent Carer Council and PSA Joint AGM, Small hall at Blackhall Primary School.





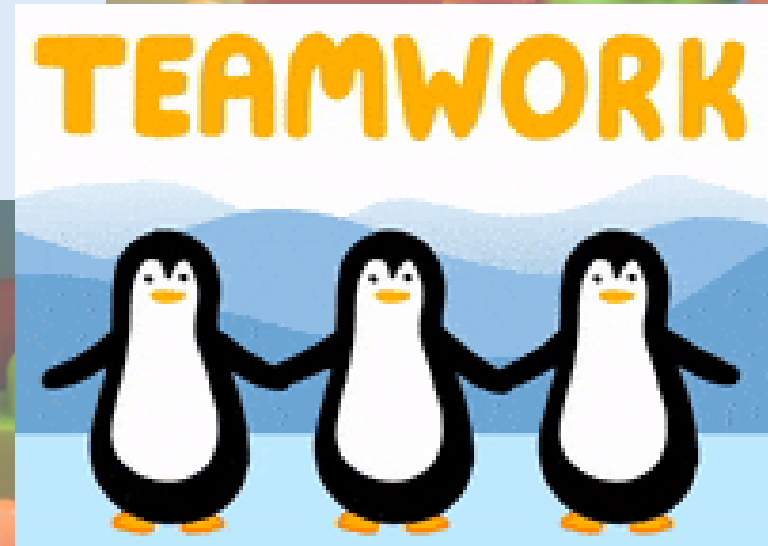
# Get involved!

- Join Classlist
- Join PSA or Parent Carer Council – 3 P1 year group representatives
- Let us know other ways you can contribute (What are your talents?)
- Come along to events
- Get involved in football



# The Blackhall Team

- Senior Leadership Team
- Teachers
- Pupil Support Assistants (PSA)
- Pupil Support Officer (PSO)
- Early Years Practitioner (EYP), Mrs Sarah Adam
- Facilities Manager, Mr Terry McCutcheon
- School Administrator, Ms Aimee Gerrard
- School Support Assistant, Mrs Anita Ashcroft





# Our Wider Team - Partnership Agencies

- ✓ Psychological Services
- ✓ Occupational Therapists, SaLT
- ✓ Additional Support for Learning Service (ASLS)
- ✓ Active Schools Co-ordinator
- ✓ School Nurse

**HOWDY PARTNER**



# Home/School Partnership

- Communication between school and home - emails, newsletters, phone calls, meetings
- Parent Staff Association/Parent Carer Council
- Volunteers
- Open Door Policy
- We really couldn't do it without you!





# Starting School

- Wednesday 14<sup>th</sup> August 9.15am - 2:45pm
- Thursday 17<sup>th</sup> August 9.15am-2:45pm
- Friday 19<sup>th</sup> August 8:50am-12.15pm
- Please order lunches for your child if required

**OFF TO SCHOOL**



- School Hours:
  - ✓ Mon-Thurs 8.50am -3.00pm
  - ✓ Fri-8.50am -12.15pm
- Reporting Absence, *including reason* - 8.10am-8.50am call office
- School lunches/Milk-ParentPay System
- Uniform/Bags
- Medication-complete the form/please do not send with your child





# Before Your Child Comes To School!

Spend time having fun with your child

- Activities
- Time To Talk

Remember to speak to Mrs Martin, Mrs Ashcroft or Mrs Adam if your child has any medical issues



Any questions?

nk you

